

# HOW TO JOIN

Just fill in the form below and hand it to your local GMB representative or post it to GMB Yorkshire & North Derbyshire region, FREEPOST NEA524, Grove Hall, 60 College Grove Road, Wakefield WF1 3SY (you do not need a stamp).

£10.40 four weekly  
 £2.60 per week if you work 21 hours or more  
 £1.45 per week if you work 10-20 hours  
 80p per week if you work less than 10 hours

FOR UNION USE ONLY Section  Branch No  Membership No  Date of joining

## GMB membership application form PLEASE USE BLOCK CAPITALS

### 1 TELL US ABOUT YOU

Surname  First name  Title  Mrs/Miss/Ms/Mr Date of birth   
 Home address  Home Tel  Email   
 Postcode  Mobile  I agree to abide by GMB rules Signature   
 Date  We ask for your ethnic origins as part of our equal opportunities policy of improving services to all members  
 Bangladeshi  Black African  Black Caribbean  Black British  Chinese  Indian  Irish  Pakistani  White  Other

### 2 TELL US ABOUT YOUR JOB

Employer  Your job   
 Address where you work  How many hours a week do you work?   
 Postcode  Pay No   
 Work Tel  Pay Date

### 3 INSTRUCTION TO YOUR BANK OR BUILDING SOCIETY TO PAY BY DIRECT DEBIT

Please fill in the form and send to GMB Yorkshire & North Derbyshire Region, Grove Hall, 60 College Grove Road, Wakefield WF1 3SY  
 Name and full postal address of your Bank or Building Society branch   
 To the Manager of  Bank/Building Society  
 Address  Postcode   
 Name(s) of account holder(s)   
 Bank/Building Society Account Number   
 Bank/Building Society Sort Code   
 Reference number (Office use only)   
 Originator's Identification Number  9 7 4 3 3 0  
 (For GMB official use only. This is not part of the instruction to your Bank/Building Society. If your A/C number is not available fill in your address below.)  
 Instructions to your Bank or Building Society. Please pay GMB Direct Debits from the account detailed in this Instruction subject to the safeguards assured by the Direct Debit Guarantee. I understand that this Instruction may remain with GMB and, if so, details will be passed electronically to my Bank/Building Society.  
 Signature(s)   
 Date   
Banks or Building Societies may not accept Direct Debit instructions for some types of account

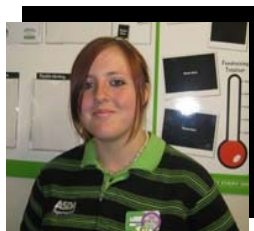
GMB - BRITAIN'S GENERAL UNION

# GMB@WORK IN ASDA

GMB— your union in ASDA

A big GMB welcome to all our new members in ASDA supermarkets, previously trading as Netto and all our other new ASDA members in stores. You have joined the only union which has over 30 years of being recognised by ASDA to represent its colleagues in store.

On some of our visits to the new stores we have asked colleagues to tell us why they joined the GMB:



Fiona Lee—Colleague at the Stainforth store

*"I was a member at the last place I worked and I always found it valuable to be in a union"*



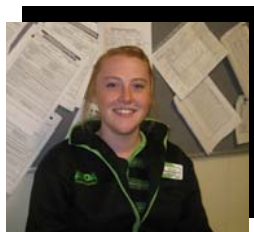
Lucy Carr—Services at Queens Road, Sheffield Store

*"For a helping hand and backup and to know your not on your own"*



Grace Rushby-Young Member on the tills at the Gateford Store

*"In case I had any troubles sorting out my contract changes due to seasonal working as I'm a student"*



# Newsletter



***Are you interested in getting involved  
or would you like to become a GMB Representative?***

***How can I become involved?***

We hope that as well as the invaluable advice and representation provided by the GMB for you, that you will become involved in the wider organisation of your union. You can have the opportunity to have your say within your Branch as a Member, or take up one of the Branch post holder positions should you wish to.

Within your workplace you can get more involved by becoming a Workplace Organiser. This means you would be able to represent your Colleagues on Industrial, Health & Safety and Learning matters issues. Paid time off for training is provided to enable you to gain the knowledge and skills you would need to become a GMB Representative.

***Our Aim***

We aim to have a representative in every ASDA Store, so that every ASDA Colleague who is a GMB member has someone to turn to in store when they most need support.

***The next Step***

Should you wish to become a Workplace Representative in your store or would like further information please contact:

*Lynn Brook or Rachel Harrison on: 0845 337 7777*

*E-mail: [lynn.brook@gmb.org.uk](mailto:lynn.brook@gmb.org.uk) or [rachel.harrison@gmb.org.uk](mailto:rachel.harrison@gmb.org.uk)*

***GMB is always listening***

Our recent survey of your priorities matches up with the reports your GMB representatives gave at their recent ASDA stores conference. You said that you want to see the company taking action on:

- substantially improving the basic rate of pay;
- bank holiday working, improved pay rates and introduction of lieu leave for working on bank holidays;
- you want to see a more family-friendly approach for colleagues working the eves;
- re-instating the differential rate of pay for night working - recognising that night workers should be fairly rewarded for working unsocial hours and the increased health risks associated with night shift working;

These are the priority issues which GMB will be taking up with the company on behalf of GMB members working for ASDA Stores nationwide. You work hard and play a vital role in the success of the business, which should be recognised by ASDA - to have your say ask your local Rep or call:

***0845 337 7777***

***Thompson's Solicitors  
there to support you in and out of the workplace***

***Issues at Work***

As the recognised Trade Union, we are able to meet with you face to face, represent you at meetings and also help to present your case professionally.

***Accident Claims***

Thompson Solicitors are an ethical firm of Solicitors and only work on behalf of GMB members. There are no costs to you and you keep 100% of any compensation which is won for you. You have direct contact with the solicitor handling your claim. Your family can also use this service through your membership. So easy to use, for further information call us on:

***0845 337 7777***

***Discounted Legal Services***

Free Advice on all legal issues

Free Will service for you and your partner

Free criminal cover for members and their families on work-related issues

Discounted conveyance and matrimonial issues

Your family can also use this service through your membership

***Successful Claims on behalf of members in ASDA Stores***

This year to date we have settled 7 claims at ASDA Stores with total compensation going to our members of £14,900 and have a number pending. In the year 2010 we settled 19 claims on behalf of our members totalling £86,000, with 100% of all money won going to our members.

***Who would you turn to if you had a problem or accident at work?***

The GMB is the only recognised Trade Union in ASDA Stores and Distribution, and has Representatives and Officers with experience in dealing with Employment Law and Health & Safety issues.

*"The GMB is Britain's General Union, with 120 years experience of representing workers dealing with bullying and harassment at work, poor health, safety and welfare facilities at work, and discrimination."* **Tim Roache Regional Secretary**

*If you require assistance please contact your local Representative in the first instance or call 0845 337 7777*

*To join fill in the application form overleaf or online  
[www.gmbbyorkshire.org.uk](http://www.gmbbyorkshire.org.uk) - JOIN NOW - Don't wait until it's too late*